

# Product & Service Datasheet

## Polymeric Tape Supply



Power CSL operates modern tape extrusion facilities housed in an ISO Class 6 clean room for the production of materials for its factory jointing service.

Power CSL can also provide polymeric tapes to client specification.

### Power CSL Polymeric Tape products include:

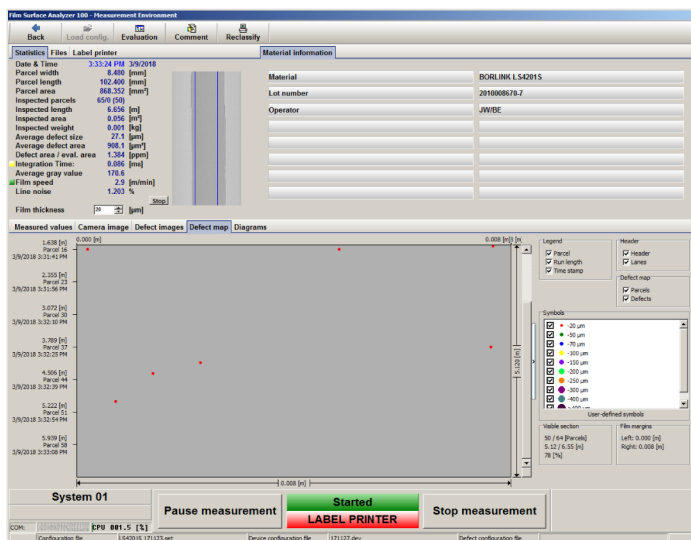
- XLPE semi-conducting and insulating tapes manufactured from cable extrusion compounds for medium & high voltage factory jointing application
- Tapes manufactured from cable sheathing compounds for factory jointing and cable repair applications



PowerCSL clean room manufactured tapes can be produced to suit the client's needs and specifications matching the variety of lengths and thicknesses required.

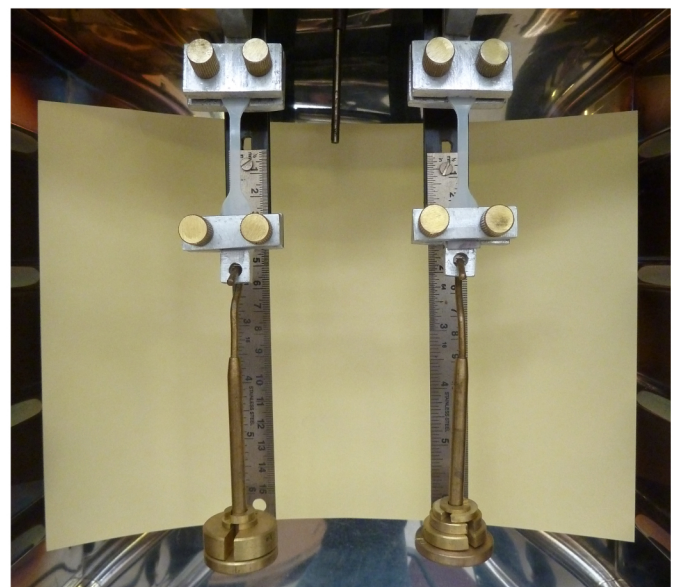
Typically used for reinstatement of core insulation layers, PowerCSL can produce tapes from the same compound as the cable to be repaired/ joined. All insulation tapes are examined using a high resolution optical inspection system to ensure the cleanliness of the tape matches the quality of the base material.

All tapes are packed in clean room grade polythene pouches and sealed within the clean room environment. These are then sealed in an aluminium foil lined bag for moisture protection and to keep the polythene pouch clean, ready for introduction into the jointing chamber.



## Key features of the Power CSL Polymeric Tapes:

- Materials such as LDPE, MDPE, HDPE and XLPE can be extruded.
- Typical tape thickness of tapes are 0.15mm to 0.5mm.
- Tape reel diameters of up to 150mm.
- Produced in an ISO class 6 cleanroom.
- Tapes packed in a polythene bag followed by an aluminium foil lined bag to prevent moisture ingress.
- All polythene tapes are run through high resolution inspection equipment to ensure contaminant free tapes.
- Compounds supplied by the client may be extruded into tapes.
- Samples are available upon request.
- All tapes are manufactured under a PCSL quality system registered to ISO 9001.



### POWER CSL

Unit 7, Jackson Park, Kingsnorth Industrial Estate, Hoo, Rochester, Kent ME3 9GA  
 Tel +44 (0)1634 253838 Email [info@powercsl.com](mailto:info@powercsl.com) Web [powercsl.com](http://powercsl.com)

Datasheet PCSL DS JPW18